

FIND YOURSELF, FIND YOUR FUTURE

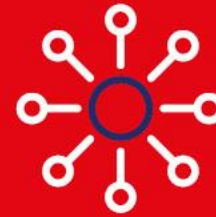


WELCOME
TO BURY COLLEGE



MAKE BURY COLLEGE YOUR FIRST CHOICE

Supportive and
highly qualified
tutors'



Excellent
progression onto
university and
into employment



A wide range of
A Levels, T Levels,
vocational programmes
and apprenticeships
available

Exceptional careers
advice, pastoral
support and
guidance



Great
Bury town
centre location

Consistently
high-performing
results



RESULTS

AN EXCELLENT
PASS RATE OF

98%

ACROSS ADVANCED
LEVEL 3 COURSES

A LEVEL
PASS RATE OF

97%

AN IMPRESSIVE
LEVEL 3 VOCATIONAL
COURSES PASS
RATE OF

98%

*Figures accurate as of August 2025

OFSTED INSPECTION AND MATRIX ACCREDITATION



WHILST AT BURY COLLEGE...

Qualifications

Employability Skills

Enrichment



FANTASTIC FACILITIES

Bury College continues to invest in the campus to offer state-of-the-art, dedicated learning facilities for our students



BE SUPPORTED

We offer a wide range of support to ensure you achieve your full potential including:

- Additional Learning Support (ALS)
- Pastoral support
- Mental health and wellbeing
- Positive Futures: Skills for Job, Skills for Life
- Careers advice and guidance
- Safeguarding
- Financial support
- Industry placements, work experience and volunteering opportunities
- Free breakfast

Positive **Futures**: Skills for Jobs, Skills for Life



BE EMPOWERED CHOOSE THE RIGHT ROUTE FOR YOU

You will study **ONE** pathway:





A LEVEL STUDY PROGRAMMES



WHAT IS AN A LEVEL STUDY PROGRAMME

- Involves studying three (or, in some cases four) subjects over 2 years
 - Examinations are the main form of assessments
 - Appeals to those who enjoy researching, reading and can work independently
-

A LEVEL ENTRY REQUIREMENTS

A minimum of **6 GCSEs** including:

- 3 GCSEs at grade 5 or higher
- 3 GCSEs at grade 4 or higher
- Including at least a grade 4 in English Language and Maths



A LEVEL SUBJECTS

Accounting	English Language	Media Studies
Art, Craft & Design	English Literature	Physical Education
Biology	Film Studies	Photography
Business Studies	Further Mathematics	Physics
Chemistry	Geography	Psychology
Computer Science	Government & Politics	Sociology
Criminology	History	
Drama & Theatre Studies	Law	
Economics	Mathematical Studies	
Engineering	Mathematics	

LIAM HALL-MOORE

ACHIEVEMENT

A Levels in Psychology (A), Chemistry (A), and Biology (B)

DESTINATION

Heading to university to study Biomedical Science

“The highlight of my time here has been expanding my knowledge and learning things I never thought I would. I wouldn’t have made it this far without the College’s help.”



T-LEVELS

THE NEXT LEVEL QUALIFICATION



T-LEVELS

THE NEXT LEVEL QUALIFICATION

WHAT ARE T LEVELS?

- T Levels combine classroom theory with practical learning and an industry placement.
- The industry placement will be for a minimum of 45-days and will give you a great insight into the working environment.
- You study **ONE** T level over two years and this is equivalent to three A Levels.
- Classroom learning 80% on the job work experience 20%

T-LEVELS

THE NEXT LEVEL QUALIFICATION

ENTRY REQUIREMENTS

- A minimum of 5 GCSE grades 9-4
- Including at least a grade 4 in English Language and Maths

Positive Futures: Skills for Jobs, Skills for Life



ISAAC MESIKE

ACHIEVEMENT

T Level Mechanical Engineering (Merit)

DESTINATION

Pursuing a career as a chartered engineer

“All my hard work, prayers, resilience, and commitment have paid off. My entire journey has been incredible and choosing Bury College was one of the best decisions I’ve ever made. I’m really proud.”



T LEVEL STUDY PROGRAMMES

- Accounting
- Business Management & Administration
- Digital Software Development
- Digital Support & Security
- Education & Childcare
- Engineering & Manufacturing, Design & Development
- Health
- Media, Broadcast & Production
- Science

T-LEVELS
THE NEXT LEVEL QUALIFICATION



VOCATIONAL STUDY PROGRAMMES



WHAT ARE VOCATIONAL STUDY PROGRAMMES?

- For those keen to learn new practical skills
 - Study **ONE** vocational course
 - One or two-year course depending on level and qualification
 - Assessment is predominantly practical and coursework based
 - Work placement opportunities
 - Group and one-to-one tutorials
-

VOCATIONAL ENTRY REQUIREMENTS

Level 3 Vocational

Minimum of 5 GCSE grades 9-4

Level 2 Vocational

Minimum of 4 GCSE grades 9-3

Level 1 Vocational

Minimum of 4 GCSE grades 9-2

Foundation Studies

Entry by interview



VOCATIONAL PROGRAMMES

Art & Design	Electrical Installation	Performing Arts
Barbering	Esports	Plastering
Beauty Therapy	Engineering	Plumbing
Bricklaying	Games Design	Public Services
Business	Hairdressing	Science
Carpentry & Joinery	Health & Social Care	Sport & Fitness
Catering	Media (Creative Media)	Travel & Tourism
Childcare	Media Make-up	
Computing & Digital	Painting & Decorating	

ROISIN FARREN

ACHIEVEMENT

Level 3 Health and Social Care (A)

DESTINATION

Heading to the university of Salford to study Adult Nursing

“I kept on trying and I’ve got the results I wanted, and my tutors were a huge support in helping me achieve this.”



**OUR LADY'S RC
HIGH SCHOOL**

FOUNDATION STUDIES

PATHWAY TO INDEPENDENCE

Moving On
Life Challenge
Life Wise
New Horizons

PATHWAY TO EMPLOYMENT

Supported Internship
Steps to Work
Work Challenge
Work Wise

PROSPECTS PROGRAMME

Step-up to Prospects
Prospects Programme



APPRENTICESHIPS



WHAT IS AN APPRENTICESHIP?



An apprenticeship is a job

- Learn and train for a specific job.
- Get paid and receive holiday leave.
- Get hands-on experience in a real job.
- Spend a minimum of six hours a week off-the-job training to complete your studies.

APPRENTICESHIP ENTRY REQUIREMENTS

You will need to:

- Meet specific employer vacancy entry requirements.
- Demonstrate an interest in the sector and have some background knowledge.
- Complete a numeracy and literacy test.

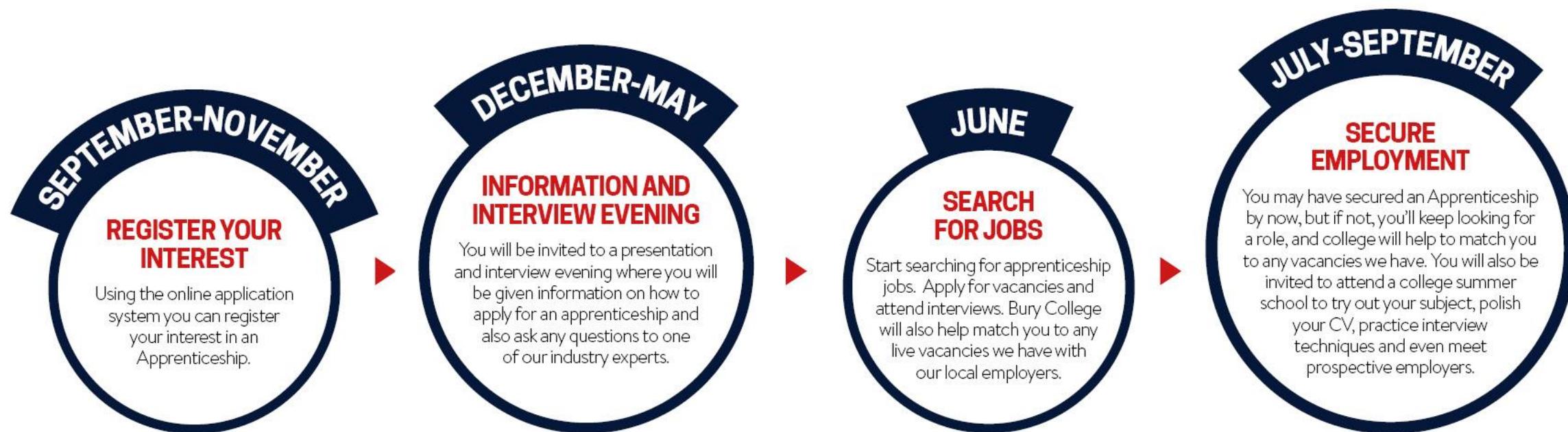


APPRENTICESHIPS AVAILABLE

- Accounting
- Adult Care (18+ only)
- Business Administration
- Childcare
- Customer Service
- Coaching Professional (18+ only)
- Dental Nursing
- Hairdressing
- Teaching Assistants
- Team Leading (18+ only)



SCHOOL LEAVER JOURNEY TO AN APPRENTICESHIP



BE COLLABORATIVE

Enrichment activities are a chance for you to meet new people and enjoy new experiences.

Previous activities have included*:

- Art Club
- Chess Club
- Dance, Drama and Singing Workshops
- Duke of Edinburgh Award
- Esports
- Music Club
- Pride Club
- Student Ambassador Scheme
- A wide range of sports, including: Badminton, Cricket, Football, Fitness Training, Nerf, Netball, Volleyball and Table Tennis
- Free use of gym, power league and running track



TRAVELLING TO BURY COLLEGE

OUR PASS

Our Pass is for 16 to 18-year-old students who live within Greater Manchester, giving you the freedom to travel free of charge.

EXCELLENT TRANSPORT LINKS

The Bury College campus is conveniently located within walking distance of the Metrolink and the bus station.

Positive **Futures**: Skills **for Jobs**, Skills **for Life**



OPEN EVENTS 2025/26

2025



5.00-7.15pm*



5.00-7.15pm*



10.30am-1.00pm*

2026



5.00-7.15pm*



*There will be a quiet session for the first 30 minutes of each event. Places are available for visitors with special educational needs and disabilities; including those with social or sensory challenges.

VISIT OUR WEBSITE TO BOOK YOUR PLACE

HOW TO APPLY

You can apply directly on our website

Applications open:

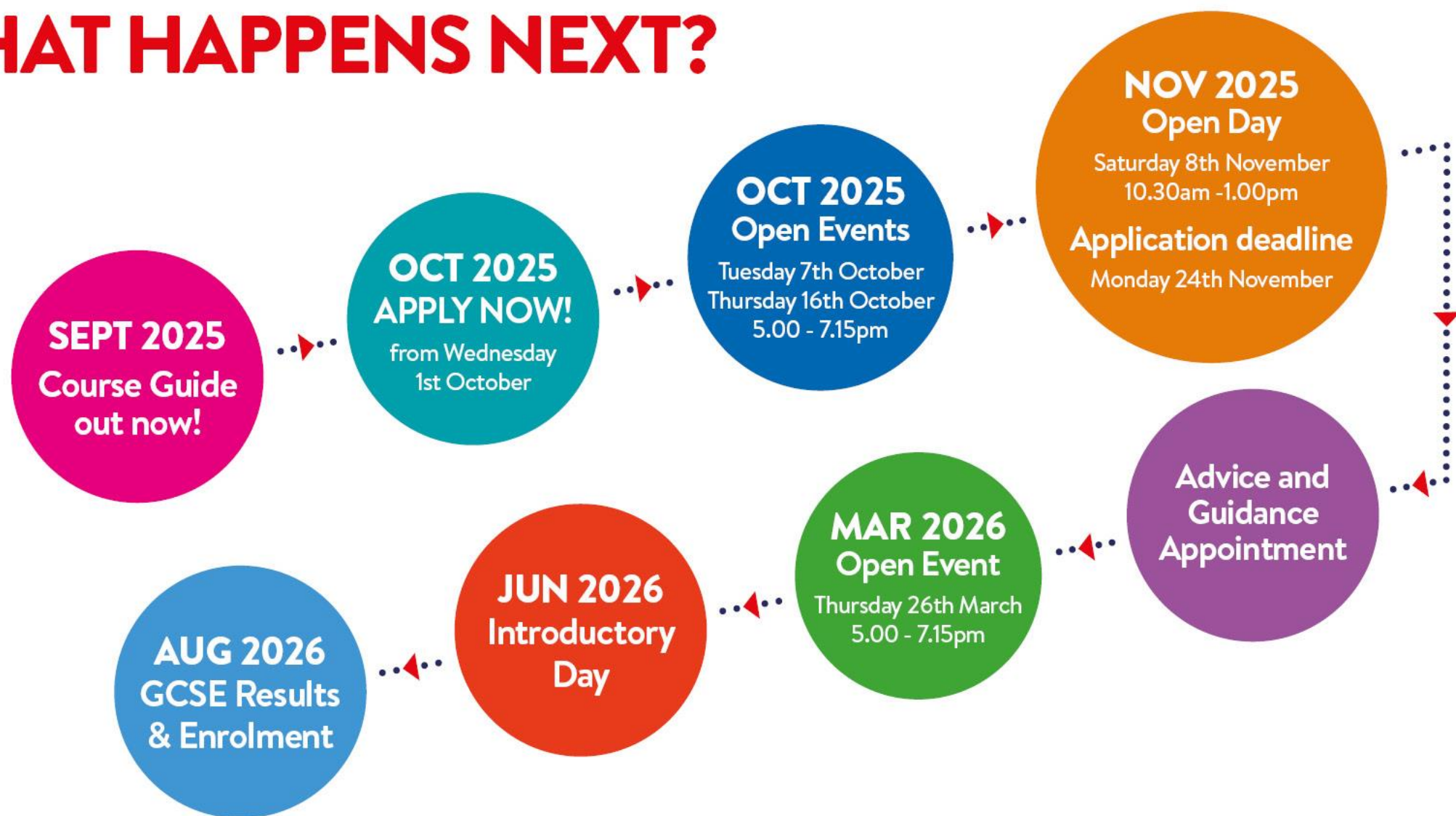
Wednesday 1st October 2025

The priority application date:

Monday 24th November 2025



WHAT HAPPENS NEXT?



Any questions please email:
admissions@burycollege.ac.uk



Keep up-to-date with all our latest news,
like and **follow** us on our social pages
or visit our website: **www.burycollege.ac.uk**

We look forward to welcoming you in September!

