



# GET

# FUTURE

# READY

WITH THE COLLEGE FOR TECHNICAL EXCELLENCE



PRESENTED BY:  
ABBIE RATCLIFFE



# YOUR OPTIONS

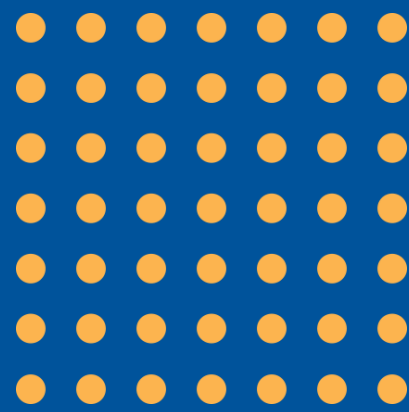
CHOOSE FROM ONE  
OF THESE ROUTES

A LEVELS

T LEVELS

VOCATIONAL COURSES

APPRENTICESHIPS







# WHAT CAN I STUDY?

## A LEVELS

Biology  
Business  
Chemistry  
Computer Science  
Economics  
English Language  
& Literature  
English Literature

Fine Art  
History  
Mathematics  
Media Studies  
Physics  
Politics  
Psychology  
Sociology

# A LEVELS

- Smaller class sizes for personable learning
- Individual time with your tutor to enhance your grade profile
- Opportunity to sit 4 AS Levels
- Terrific Enrichment opportunities
- Outstanding academic programmes combined with professional qualifications and valuable work experience
- **Partnerships with employers or universities** - Secure your place at **top universities** and prestigious employers.

## LILY RUTHERFORD

**Former School:**  
St Josephs RC High School

**Course:**  
**A** - Mathematics  
**A** - Chemistry  
**B** - Physics

Beth has progressed to Forensic Psychology - Manchester Metropolitan University

**“All the teachers are very supportive. All the guest speakers we had have really helped me figure out what I want to do in the future. “**





# A LEVEL

# EXTENDED CHOICES

- If you prefer a combination of assignments and exams,
- Extended Choices is the best route for you.
- Choose two A Levels and a Level 3 BTEC Extended Certificate, equivalent to one A Level to prepare for health and science; business and law; criminology; film & digital media; and computing related careers.

## NIEVE SANKEY

**Former School:**  
Fred Longworth High School

**Course:**  
A Level Psychology and Sociology, BTEC Criminology

**Progression:**  
BSc (Hons) Primary Education with QTS - Edge Hill University



**GET**

***T-LEVELS***

**INDUSTRY**

**READY**

High quality work focussed alternative  
to A Levels.

Learn key skills that employers look for  
in employees.

**80%**

**CLASSROOM**

**20%**

**WORKPLACE**

# T-LEVELS

## ANIMAL MANAGEMENT

ANIMAL CARE & MANAGEMENT

## ART & DESIGN

TEXTILES & FASHION MAKER

## BUSINESS, ACCOUNTING & LAW

ACCOUNTANCY  
BUSINESS SUPPORT  
LAW & CRIMINAL JUSTICE  
MARKETING

## CHILDCARE & EARLY YEARS EDUCATION

EDUCATION  
- TEACHING & EDUCATION

EDUCATION - EARLY YEARS  
EDUCATION & CHILDCARE

## COMPUTER SCIENCE & DIGITAL SKILLS

DIGITAL PRODUCTION,  
DESIGN & DEVELOPMENT

## CONSTRUCTION TRADES

ELECTRICAL INSTALLATION –  
BUILDING SERVICES ENGINEERING  
FOR CONSTRUCTION

## ENGINEERING

DESIGN, SURVEYING & PLANNING -  
CIVIL ENGINEERING

DESIGN, SURVEYING & PLANNING -  
CONSTRUCTION &  
THE BUILT ENVIRONMENT

MECHANICAL ENGINEERING – DESIGN  
& DEVELOPMENT

ELECTRICAL & ELECTRONIC  
ENGINEERING – DESIGN & DEVELOPMENT

## HEALTH & SOCIAL CARE

NURSING & HEALTH PROFESSIONAL  
CAREERS

MENTAL HEALTH NURSING

## MEDIA

MEDIA, BROADCAST & PRODUCTION



# T-LEVELS

## WHAT ARE MY OPTIONS AFTER

### APPRENTICESHIPS

You can go on to a higher or degree apprenticeship at Level 4 or above, developing the knowledge, skills and behaviours you've learned.

### EMPLOYMENT

You'll be work ready as T Levels are designed with employers so when you apply for jobs you'll stand out with a combination of specialist skills and workplace experience.

### HIGHER EDUCATION

You can go to university. If you achieve a pass grade you'll get the UCAS points you need to apply for your dream course.

We'll support you with the costs of travel to your placement through a range of bus pass schemes.



MATALAN



WILLMOTT DIXON  
SINCE 1852



# T-LEVELS



## JOSHUA PRESTON

**Former School:** Westhoughton High School

**T Level Course:** Accounting

**Progression:**  
Employment – Financial Admin – Aptus Utilities



## PHOEBE KELLY

**Former School:** St Edmund Arrowsmith Catholic School

**T Level Course:** Education

**Progression:**  
BA (Hons) Education - University of York



## MILLIE SIMMS

**Former School:** Golborne High School

**T Level Course:** Design, Surveying and Planning – Construction & the Built Environment

**Progression:**  
Degree Apprenticeship – Willmott Dixon



# VOCATIONAL SUBJECTS



- Focus on **one** subject
- Assessments mainly through coursework, projects and practical **work experience**
- Route to **university** or **employment**
- You will gain employability skills, industry knowledge and experience
- Level 3 Extended Diploma equivalent to studying 3 A Levels
- Provides UCAS points for University Study





# VOCATIONAL SUBJECTS



## CREATIVE

- Art & Design
- Creative Design for Gaming
- Creative Digital Media
- Graphic Design
- Fashion, Textiles & Clothing
- Photography
- Music
- Performing Arts
- Dance
- Acting
- Musical Theatre





# VOCATIONAL SUBJECTS



## ENGINEERING

- Civil Engineering
- Electrical & Electronic Engineering
- Mechanical Engineering
- Motor Vehicle Engineering

## CONSTRUCTION TRADE

- Bricklaying
- Carpentry & Joinery
- Electrical Installation
- Painting & Decorating
- Plastering
- Plumbing





# NORTH-WEST CONSTRUCTION TECHNICAL EXCELLENCE COLLEGE

- Awarded CTEC status for outstanding technical training and education.
- Recognized as the leading college for construction education in the North West region.
- 1 of 10 Technical Excellence Colleges nationally





# VOCATIONAL SUCCESS

## HOLLY LEECE

**Course:** Level 3 Applied Science

**Former school:**

Bolton St Catherine's Academy

**Results:**

Distinction\*, Distinction\*, Distinction

**Progression:**

BSc (Hons) Biology - University of York

"I've enjoyed the practical sessions and the small class sizes mean we get more 1-1 support from our tutors."

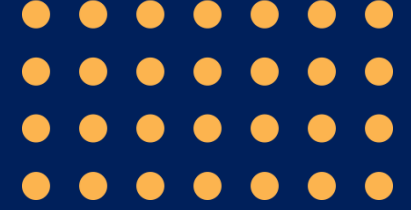
**FUTURE**

**FORENSIC  
SCIENTIST**



# WHY

# APPRENTICESHIPS?



**Hands-on relevant  
experience rather  
than all classroom  
study**

**Get a step ahead on  
your career path**

**Earn while you  
study**

**Paid holidays**

**Get a degree level  
apprenticeship with  
no debt**

**Support and  
guidance from  
your employer  
and assessor**

**START YOUR DREAM  
CAREER WITH AN**

# **APPRENTICESHIP**

**We are the largest College  
provider of apprenticeships in  
Greater Manchester**

## **We offer more than 80 apprenticeships in:**

- Accounting
- Beauty Therapy
- Business Administration
- Catering & Hospitality
- Childcare & Early Years
- Civil Engineering
- Construction Crafts (Brickwork, Joinery, Painting & Decorating, Plastering, Plumbing & Heating)
- Customer Service
- Digital Marketing
- Electrical & Electronic Engineering
- Electrical Installation
- Facilities Services
- Food & Drink Manufacturing
- Hairdressing
- Health & Social Care
- Human Resources
- Mechanical Engineering
- Metal Fabrication
- Motor Vehicle
- Teaching Assistant
- Team Leading & Management.

**electricity  
north west**

Bringing energy to your door

**MBDA**  
MISSILE SYSTEMS

**NetworkRail**

**NHS**  
Wrightington, Wigan and  
Leigh Teaching Hospitals  
NHS Foundation Trust

**REDROW**

**Sellafield Ltd**

**Wigan**   
**Council**



# ENHANCE

# YOUR LEARNING

## WITH THE BEST TECH FACILITIES



## YOUR NEW COLLEGE - COMING SOON

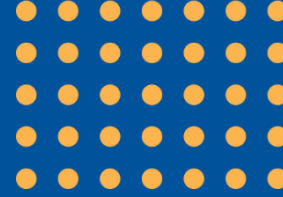




# ENHANCE

# YOUR LEARNING

## WITH THE BEST TECH FACILITIES



FUTURE ENERGY ZONE

<1  
FUTURE ENERGY ZONE  
2>

AUTOMOTIVE  
ENGINEERING AND  
FUTURE ENERGY LAB

POWERHOUSE: NOVEMBER 2025



# OUR CAMPUSES



PARSONS WALK CAMPUS



CENTRE FOR ADVANCED  
TECHNICAL STUDIES







LEIGH CAMPUS

# OUR CAMPUSES





# FREE

# BUS PASS



FIND OUT  
MORE



# UPCOMING EVENTS

TODAY – LUNCH  
TIME





# WHAT HAPPENS

## NEXT

- **APPLY**
- Attend your **college interview** where you will receive your college offer
- Some courses may require you to attend an audition
- **New Student Day:**  
Wednesday 1<sup>st</sup> July 2026
- Achieve your results and enrol on GCSE results day



# OPEN

# EVENTS

Please visit [wigan-leigh.ac.uk](http://wigan-leigh.ac.uk)  
to book your place.



AT THE COLLEGE FOR  
TECHNICAL EXCELLENCE

**Monday 6 October 2025**

**PARSONS WALK CAMPUS (WN1 1RR)**

**4.30pm - 7.00pm**

**Monday 3 November 2025**

**Monday 26 January 2026**

**Monday 27 April 2026**

**Monday 13 October 2025**

**LEIGH CAMPUS (WN7 4JY)**

**4.30pm - 7.00pm**

**Monday 11 November 2025**

**Monday 2 February 2026**